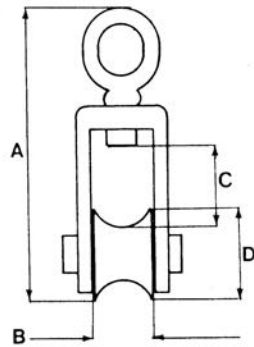
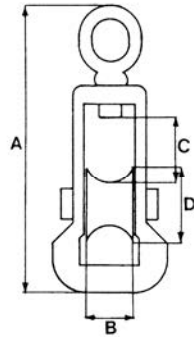


Roller



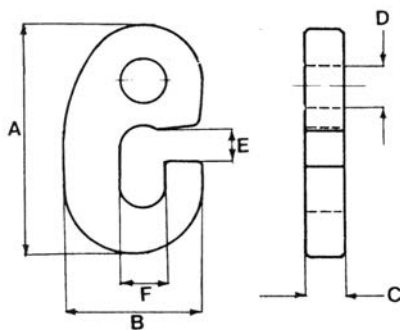
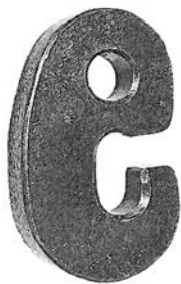
Vare nr. Part no. Parte no.	SWL 5:1	A	B	C	D	Vægt Weight	Løs skive Spare sheave Repuesto rodillo	Løs bolt Spare pin Repuesto pasador
	Ton	mm	mm	mm	mm	kg	no.	no.
E13G	1,0	210	40	50	60	1,8	SE 13	PE 13
E14G	3,6	240	50	50	80	3,9	SE 14	PE 14
E15G	5,0	280	50	60	80	5,2	SE 15	PE 15



Roller w/bow

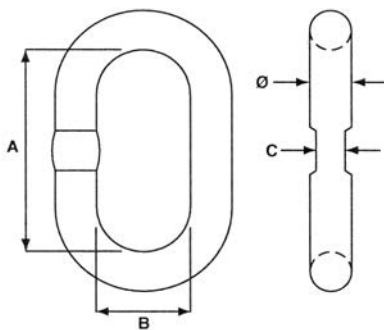
Vare nr. Part no. Parte no.	SWL 5:1	A	B	C	D	Vægt Weight	Løs skive Spare sheave Repuesto rodillo	Løs bolt Spare pin Repuesto pasador
	Ton	mm	mm	mm	mm	kg	no.	no.
E13BG	1,0	250	40	50	60	2,1	SE 13	PE 13
E14BG	3,6	275	50	50	80	4,3	SE 14	PE 14
E15BG	5,0	320	50	60	80	5,6	SE 15	PE 15
E16BG	6,8	340	70	70	90	9,2	SE 16	PE 16

G-Hooks



Vare nr. Part no. Parte no.	SWL 5:1	A	B	C	D	E	F	Vægt Weight Peso- kg
	Ton	mm	mm	mm	mm	mm	mm	kg
EG 01	1,0	88	55	12	17	10,5	14	0,36
EG 02	1,5	107	66	16	20	13,0	19	0,60
EG 03	3,2	123	77	20	26	15,0	22	0,90
EG 04	4,4	150	95	25	32	20,0	26	1,80
EG 05	5,6	180	115	30	38	23,0	31	3,10
EG 06	10,0	195	126	35	41	25,0	34	4,40
EG 07	12,5	230	140	40	47	28,0	38	6,60

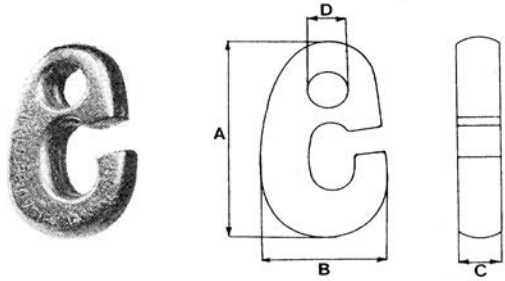
Recessed Links



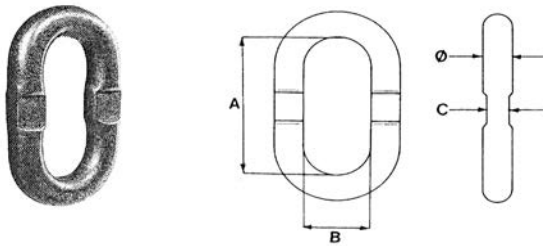
Vare nr. Part no. Parte no.	SWL 5:1	Ø	A	B	C	Vægt Weight Peso- kg
	Ton	mm	mm	mm	mm	kg
ER 01	1,0	12	70	30	10	0,20
ER 02	1,5	16	85	35	12	0,40
ER 03	3,2	20	110	45	14	0,90
ER 04	4,4	25	130	50	18	1,50
ER 05	5,6	28	150	60	21	2,10
ER 06	10,0	32	150	60	23	2,80
ER 07	12,5	35	160	73	26	3,80

Boss G-Hook

Stainless Steel



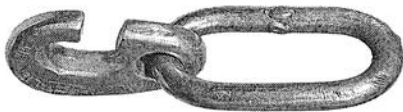
Vare nr. Part no. Parte no.	Str. Size Tamaño	SWL 5:1	A	B	C	D	Vægt Weight Peso
		Ton	mm	mm	mm	mm	kg
BOSS GH3S	1"	3,0	122	76	25	23	0,90
BOSS GH6S	1 1/4"	6,0	178	104	33	35	2,70



Boss Recessed Link

Stainless Steel

Vare nr. Part no. Parte no.	Str. Size Tamaño	Ø	SWL 5:1	A	B	C	Vægt Weight Peso
		mm	Ton	mm	mm	mm	kg
BOSS L3S	7/8"	22	3,0	98	38	16	0,80
BOSS L6S	1"	25	6,0	125	51	22	1,50

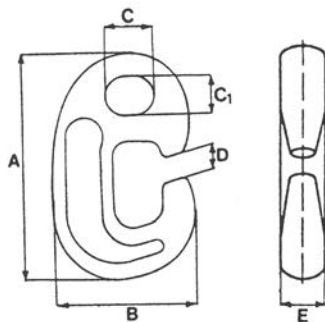


Combinations

Vare nr. Part no. Parte no.	Str. Size Tamaño	Beskrivelse Description Descripción	Vægt Weight Peso
		Ton	mm
EGR 20 SS	3/4"	BOSS GH3S + C19-110 SSO	1,60



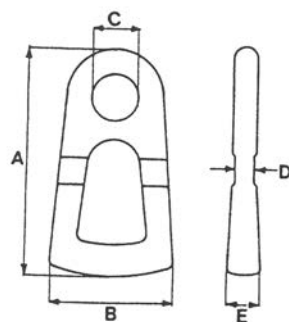
Vare nr. Part no. Parte no.	Str. Size Tamaño	Beskrivelse Description Descripción	Vægt Weight Peso
		Ton	mm
ELC 16 SS	5/8"	BOSS L3S + A 16 SS	1,60



BMM G-Hook

High Tensile Steel

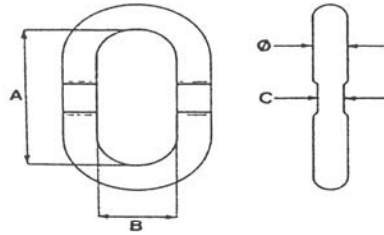
Vare nr. Part no. Parte no.	SWL 5:1	A	B	C	C1	D	E	Vægt Weight Peso
	Ton	mm	mm	mm	mm	mm	mm	kg
EVG 03	3,0	115	70	30	30	17	20	0,65
EVG 05	5,0	132	82	38	38	17	26	1,20
EVG 08	8,0	153	97	42	42	18	30	1,90
EVG 10	10,0	180	115	40	30	18	35	3,30
EVG 15	15,0	215	136	50	40	18	45	6,05
EVG 20	20,0	240	155	60	50	27	50	8,40



BMM Recessed Link

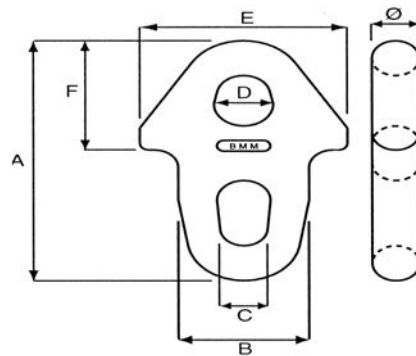
High Tensile Steel

Vare nr. Part no. Parte no.	SWL 5:1	A	B	C	D	E	Vægt Weight Peso
	Ton	mm	mm	mm	mm	mm	kg
EVR 08	8,0	175	97	38	15	22	1,4
EVR 10	10,0	205	140	40	17	25	2,5



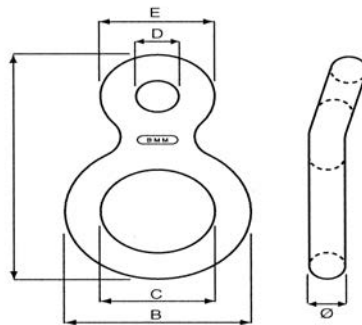
BMM Master Link

Vare nr. Part no. Parte no.	SWL 5:1	Ø	A	B	C	Vægt Weight Peso
	Ton	mm	mm	mm	mm	kg
EVM 100	10,0	21	100	36	14	0,8
EVM 120	12,0	25	122	48	16	1,7
EVM 150	15,0	30	170	75	17	2,8
EVM 200	20,0	34	185	85	25	4,2



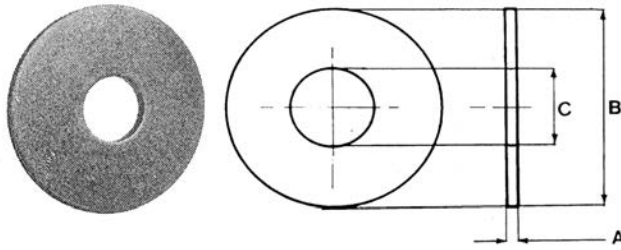
Stopper

Vare nr. Part no. Parte no.	SWL 5:1	Ø	A	B	C	D	E	F	Vægt Weight Peso
	Ton	mm	mm	mm	mm	mm	mm	mm	kg
E90-407S	12,0	32	220	88	36	40	140	100	3,3



Kellys Eye

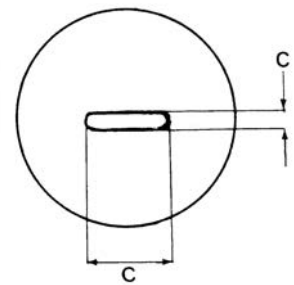
Vare nr. Part no. Parte no.	SWL 5:1	Ø	A	B	C	D	E	Vægt Weight Peso
	Ton	mm	mm	mm	mm	mm	mm	kg
E90-406	12,0	32	270	163	100	38	100	4,4



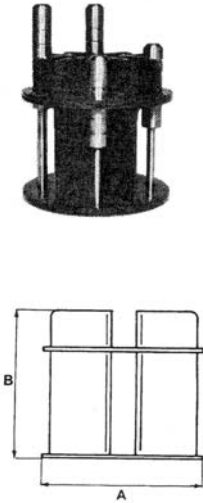
Washers

Vare nr. Part no. Parte no.	A	B	C	Vægt Weight Peso	For kæde For chain O/cadena
	mm	mm	mm	Kg/100	
EW 8 - 100 - 40	8	100	40,0	40,0	10 mm
EW 8 - 100 - 50	8	100	50,0	37,0	13 mm
EW 8 - 120 - 40	8	120	40,0	60,0	10 mm
EW 8 - 120 - 50	8	120	50,0	55,0	13 mm
EW 8 - 150 - 40	8	150	40,0	120,0	10 mm
EW 8 - 150 - 50	8	150	40,0	110,0	13 mm
EW 8 - 150 - 60	8	150	60,0	100,0	16 mm
EW 10 - 120 - 25,5	10	120	25,5	78,0	-
EW 10 - 120 - 30,5	10	120	30,5	75,0	-
EW 10 - 120 - 50	10	120	50,0	70,0	13 mm
EW 10 - 120 - 60	10	120	60,0	65,0	16 mm
EW 10 - 150 - 40	10	150	40,0	150,0	10 mm
EW 10 - 150 - 50	10	150	50,0	140,0	13 mm
EW 10 - 150 - 60	10	150	60,0	130,0	16 mm
EW 10 - 150 - 75	10	150	75,0	102,0	19 mm
EW 10 - 200 - 75	10	200	75,0	233,0	19 mm
EW 12 - 150 - 75	12	150	70,0	135,0	19 mm
EW 12 - 200 - 75	12	200	75,0	340,0	19 mm
EW 14 - 150 - 75	14	150	75,0	140,0	19 mm
EW 14 - 200 - 75	14	200	75,0	327,0	19 mm
EW 20 - 200 - 75	20	200	75,0	560,0	19 mm
EW 25 - 200 - 75	25	200	75,0	700,0	19 mm

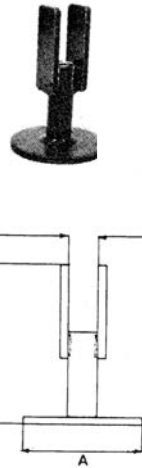
Vare nr. Part no. Parte no.	A	B	C	Vægt Weight Peso	For kæde For chain O/cadena
EW 8 - 120 - 54	8	120	21x 54	57,0	HL-13-8
EW 10 - 120 - 61	10	120	21x 61	66,0	LL-16-8
EW 10 - 150 - 48	10	150	71x48	160,0	HL-11-8
EW 10 - 150 - 54	10	150	21x54	160,0	HL-13-8
EW 10 - 150 - 61	10	150	21x61	160,0	LL-16-8
EW 10 - 150 - 71	10	150	23x71	150,0	LL-19-8
EW 12 - 150 - 71	12	150	23x71	137,0	LL-19-8



E600/E610:



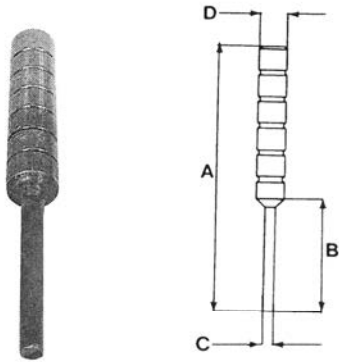
E650:



Tool with Punches

For connectors

Vare nr. Part no. Parte no.	A	B	C	D	Vægt Weight Peso	Antal dorne Number of punches No. punzones	For samleled For connector P/conectores
	mm	mm	mm	mm	kg		
E600	160	170	25	21	6,8	4	10-13-16-19
E601	160	170	25	21	5,1	0	
E610	160	200	35	28	7,2	2	19-22
E611	160	200	35	28	6,1	0	
E650	120	190	32	-	1,7	0	13-16

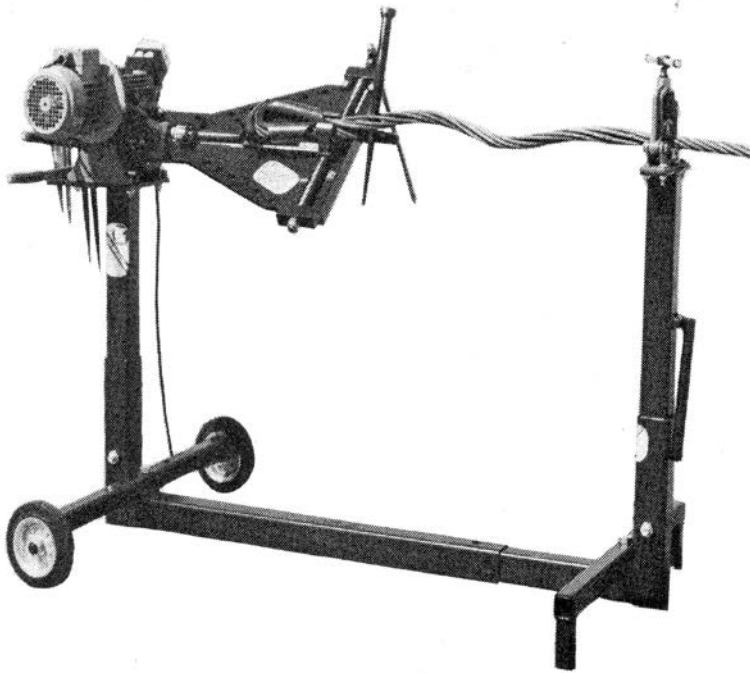


Punches

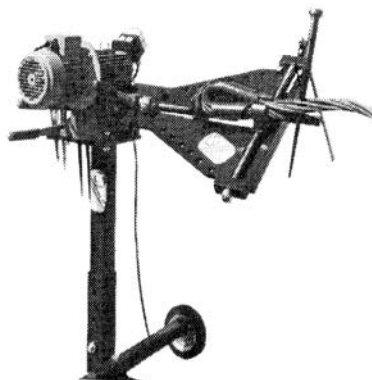
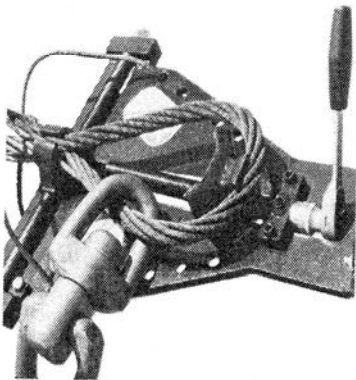
Vare nr. Part no. Parte no.	A	B	C	D	Vægt Weight Peso	For samleled For connector P/conectores
	mm	mm	mm	mm	kg	
E600-05	175	50	5	22	0,33	7
E600-07	190	70	7	22	0,36	10
E600-09	210	85	9	22	0,41	13
E600-11	220	100	11	22	0,45	16
E600-13	240	115	13	22	0,50	19
E600-15	250	125	15	22	0,55	22
E600-17	265	140	17	22	0,65	26

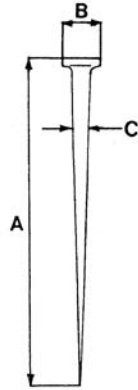
Wire Splicing Stand w/motor

Complete with wire vise, wire hold and splicing stand



Vare nr. Part no. Parte no.	Vægt Weight Peso	Beskrivelse Description Descripción
E 200	kg 142,0	E 134-M + E 150 + E 160

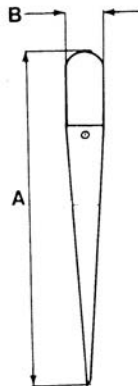




Marline Spikes for Wire

Chrome Steel, hardened tip

Vare nr. Part no. Parte no.	A	A	B	C	Vægt Weight Peso	Materiale Material Material
	mm	inch	mm	mm	kg	
EM 260 CH	260	10"	28	16	0,24	Chrom stål, hærdet spids
EM 310 CH	310	12"	28	20	0,37	Chrome steel, hardened tip
EM 350 CH	350	14"	38	25	0,81	Acero cromado, punta templada
EM 410 CH	410	16"	38	25	1,06	-
EM 450 CH	450	18"	43	28	1,21	-
EM 510 CH	510	20"	43	28	1,39	-
EM 610 CH	610	24"	43	28	1,88	-
EM 700 CH	700	28"	43	28	2,30	-
EM 900 CH	900	36"	43	28	3,38	-



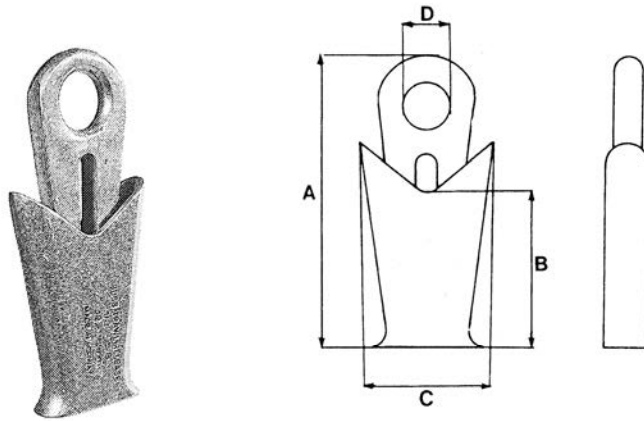
Marline Spikes

Stainless Steel

Vare nr. Part no. Parte no.	A	B	Vægt Weight Peso	Håndtag Handle Mango de
	mm	mm	kg	
EM 170 SS	170	24	0,030	Træ/wood/madera
EM 280 SS	280	32	0,125	Træ/wood/madera
EM 305 SS	305	33	0,260	Nylon/nylon/nylon
EM 385 SS	385	43	0,460	Nylon/nylon/nylon

Boss Trawl Release

Stainless Steel



Vare nr. Part no. Parte no.	Type Type Tipo	A	B	C	D	Vægt Weight Peso
		mm	mm	mm	mm	kg
BOSS 07-12	7-12 mm	78	59	29	15	0,4
BOSS 12-16	12-16 mm	145	98	55	20	1,6
BOSS 16-20	16-20 mm	167	98	65	24	1,9